



MAKING ACTION POSSIBLE
for Southern Arizona



MAP Talk

**Fewer Bumps Ahead:
Tucson's Roads Improve**

June 12, 2019

10:00-10:30am





MAKING ACTION POSSIBLE
for Southern Arizona



Jennifer Pullen

MAP Dashboard Coordinator

jpullen@eller.arizona.edu





MAKING ACTION POSSIBLE
for Southern Arizona



George Hammond

EBRC Director





Webinar Details

- ▶ **The MAP Talk will be recorded**
 - ▶ See the MAP Dashboard website for recordings
- ▶ **Conference mode**
 - ▶ Everyone muted except presenter
- ▶ **How to ask a question**
 - ▶ Email anytime to ghammond@email.arizona.edu



Sustaining Sponsors



Partners





MAKING ACTION POSSIBLE
for Southern Arizona



New International Recognition!

MAP DASHBOARD WINS
INTERNATIONAL AWARD



Community
Indicators
Consortium

Learn More





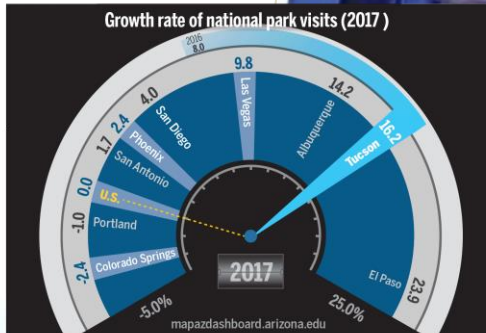
Arizona Daily Star

Tucson economy: MAP Dashboard

Monthly Stats	Change Year/Year
Non-farm jobs 389,100 (October 2018)	+1.9%
Unemployment rate 4.1% (October 2018)	-0.2% pts.
Median home price \$215,000 (October 2018)	+7.6%
Pesos per U.S. dollar 19.20 (October 2018)	+2.0%

Tucson ranks high for national park visits as growth rate doubled in 2017

In 2017, the growth rate in national park visits within the Tucson metropolitan statistical area was 16.2 percent, double the previous year's growth. Tucson ranked second among peer western MSAs behind El Paso. Colorado Springs and Portland posted a decline in the number of visitors to national parks located in their respective regions, while the growth in visitors to national parks across the U.S. remained flat. Recreational land and outdoor leisure opportunities attract visitors to a region, which can serve as an important input for local retail and service sectors. Additionally, recreation land provides communities with direct social and economic benefits and has been linked to amenity-driven economic development, increased real estate values, and positive public health outcomes.



Tucson's health: MAP Dashboard

In 2016, those living in the Tucson MSA reported 3.9 poor mental health days each month. This tied Tucson for eighth place with Portland among 12 peer western metros. Residents of Austin and Denver reported the least number of poor mental health days at 3.3, and Las Vegas residents reported the most at 4.3. Behavioral health is a key component of a person's well-being and can affect an individual's health, longevity and productivity. To learn more about mental health and other behavioral health conditions in Southern Arizona visit the MAP Dashboard.

Number of poor mental health days per month (2016)





How Do Renters Fare?

[Learn More](#)

Arizona's Role in Border Trade

[Learn More](#)

Home Prices in Tucson Continue to Increase

[Learn More](#)

12.6% of Arizonans have a disability

[Learn More](#)

Explore How Local Organizations Use the MAP

[LEARN MORE](#)

Tucson Added 5,400 Jobs Last Year

[Learn More](#)

Hot Spots in Four Arizona Cities

[Learn More](#)

How Much Has Your Community Improved?

[Learn More](#)

Unleashing Growth: The Power of Innovation

[Learn More](#)



MAKING ACTION POSSIBLE
for Southern Arizona

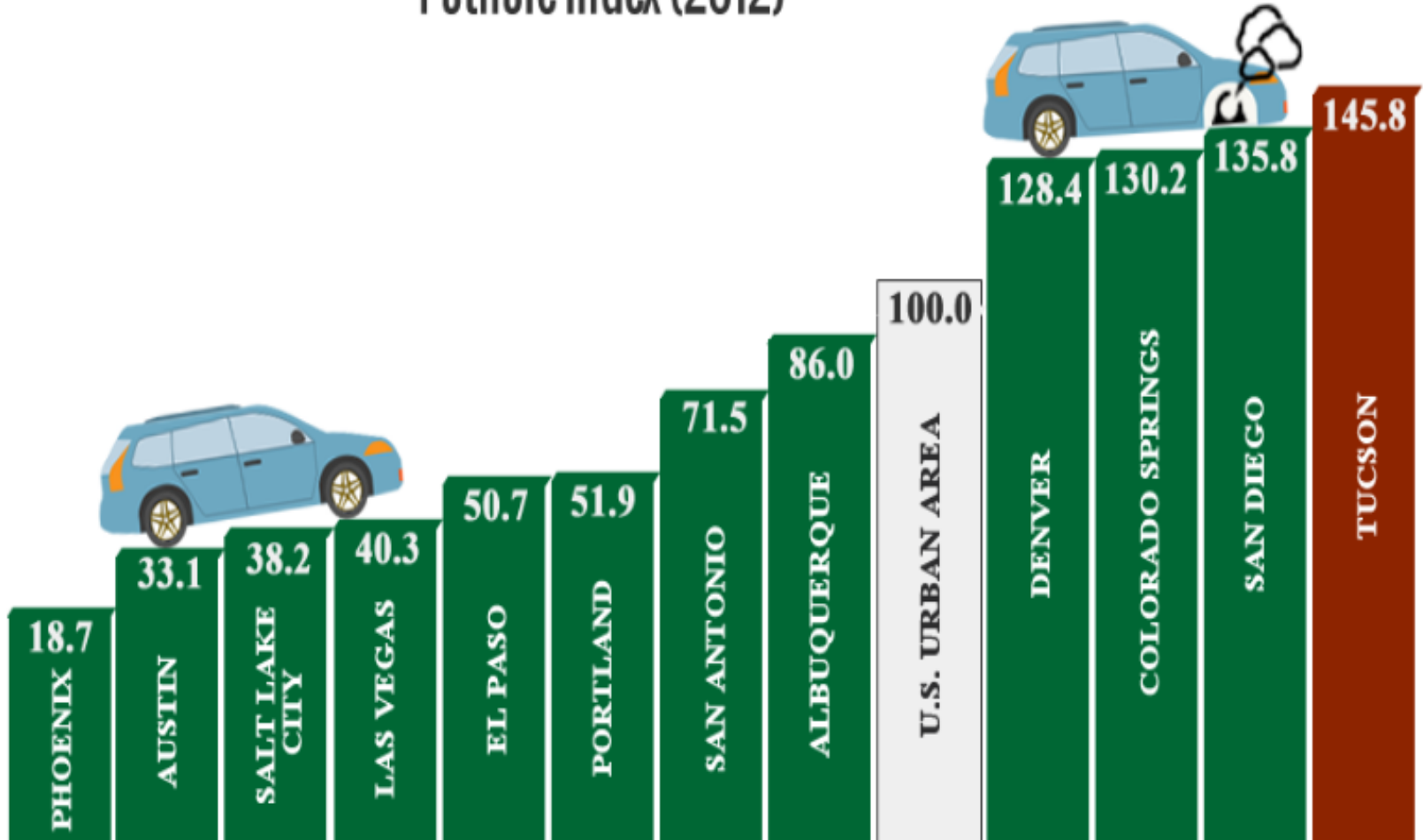


Fewer Bumps in the Road Ahead





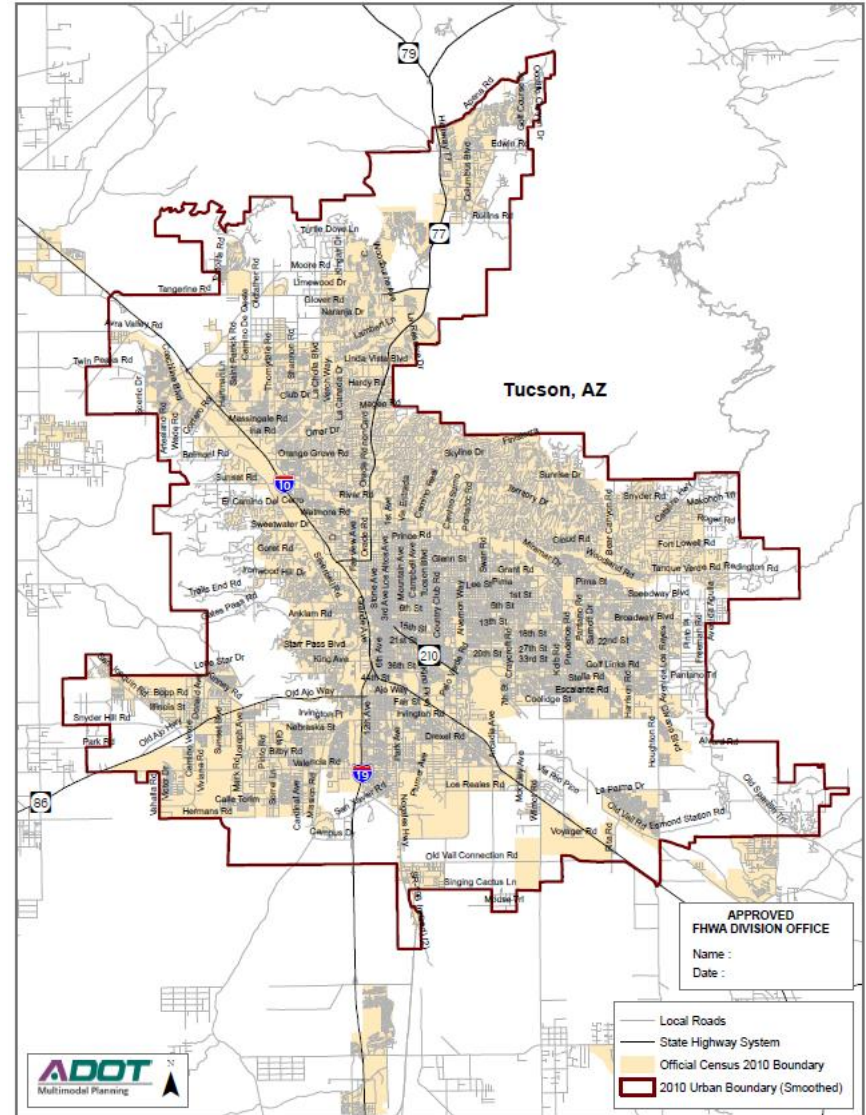
Pothole Index (2012)





2010 Federal Urbanized Boundary

- Interstates
- Freeways
- Other Principal Arterials
- Minor Arterials





• Previous Limitations

- Standard procedure for calculating IRI
- Varying report rates
- Over reporting of minor arterial data





- **Why Do We Care About Road Roughness**
 - Deteriorated roads increase user costs
 - Commuter comfort
 - Better traffic flow





MAKING ACTION POSSIBLE
for Southern Arizona



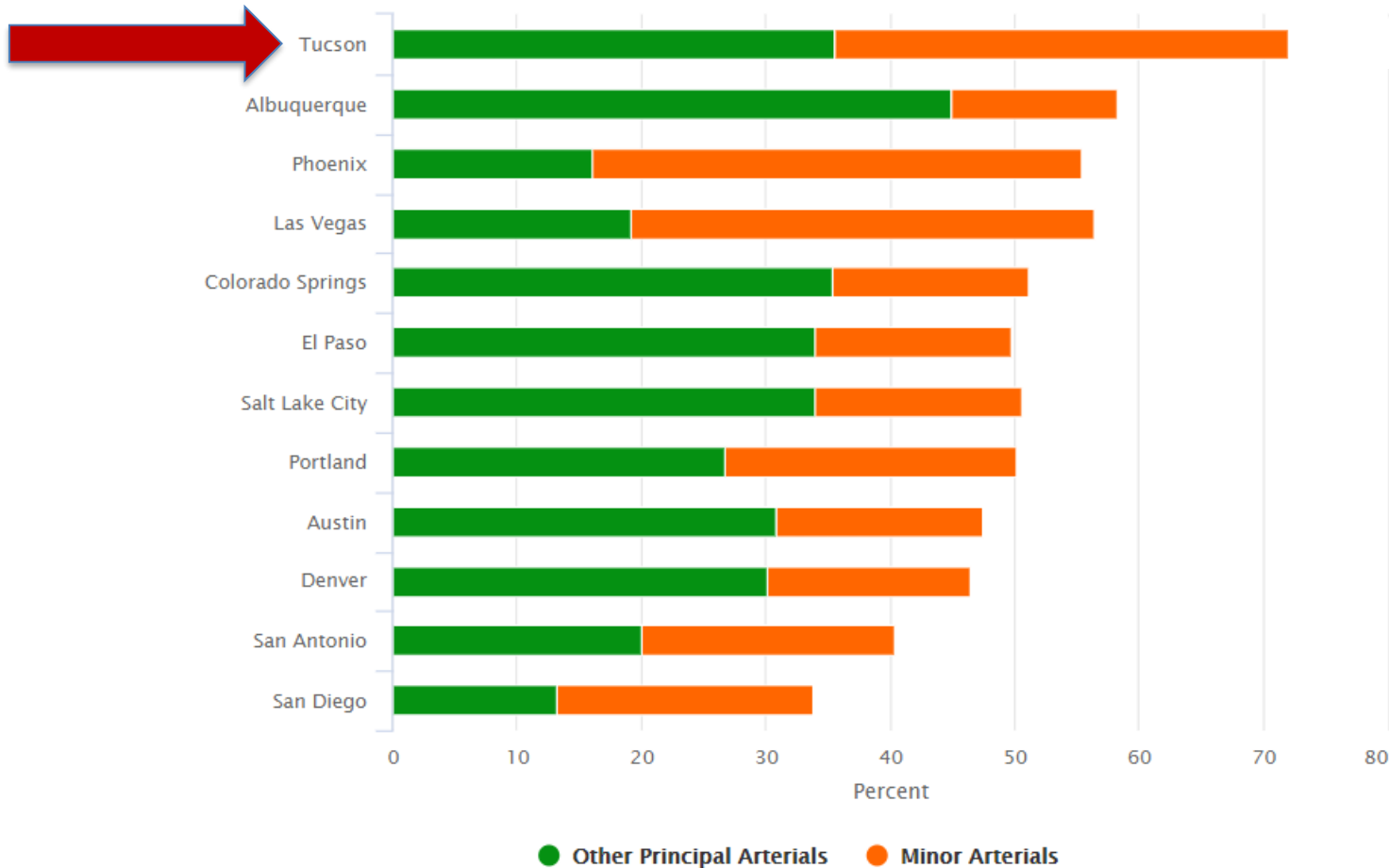
Putting Miles On Our Cars





Putting Miles On Our Cars

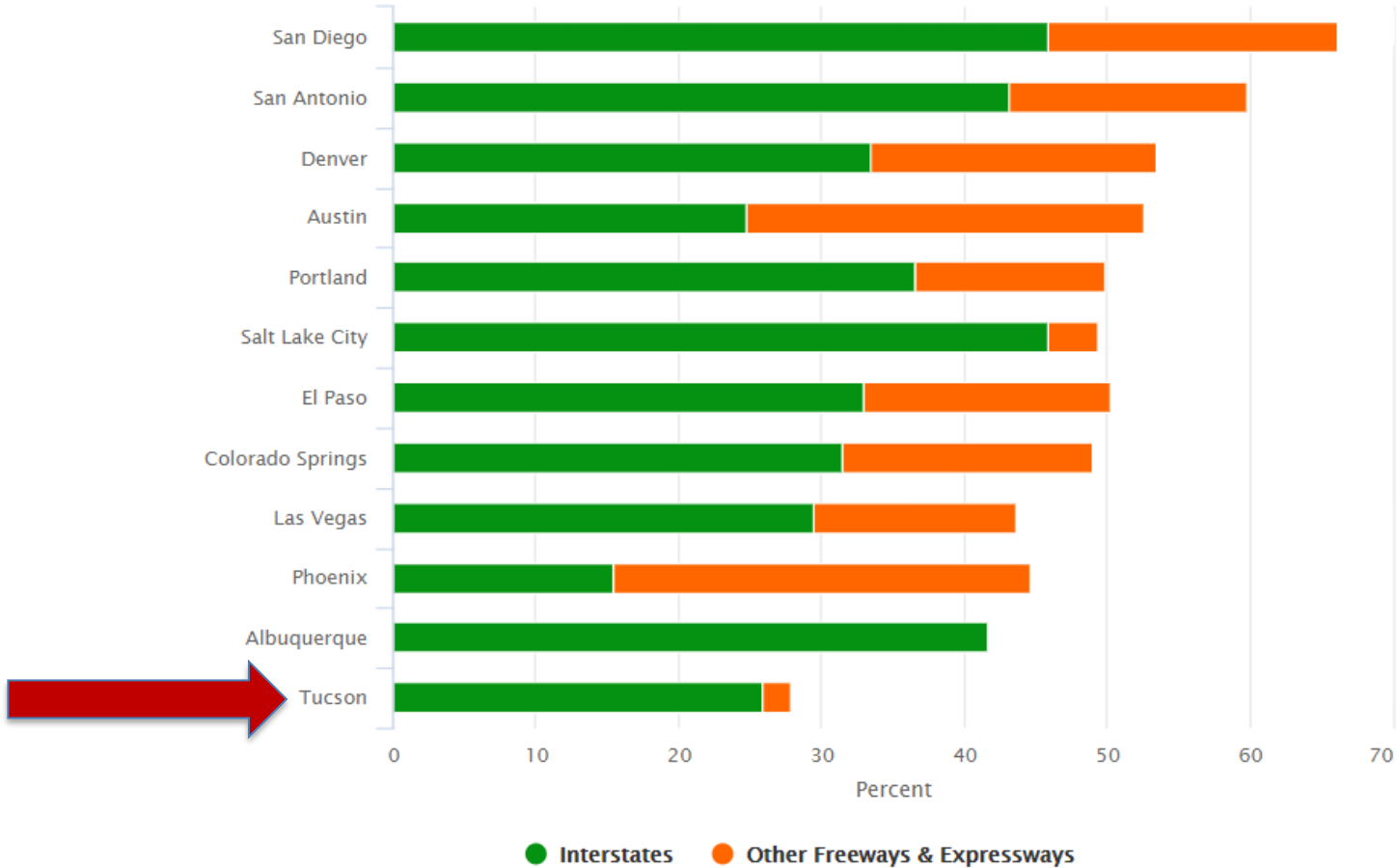
Figure 1: Percent of Vehicle Miles Traveled on Other Principal Arterials and Minor Arterials (2017)





Putting Miles On Our Cars

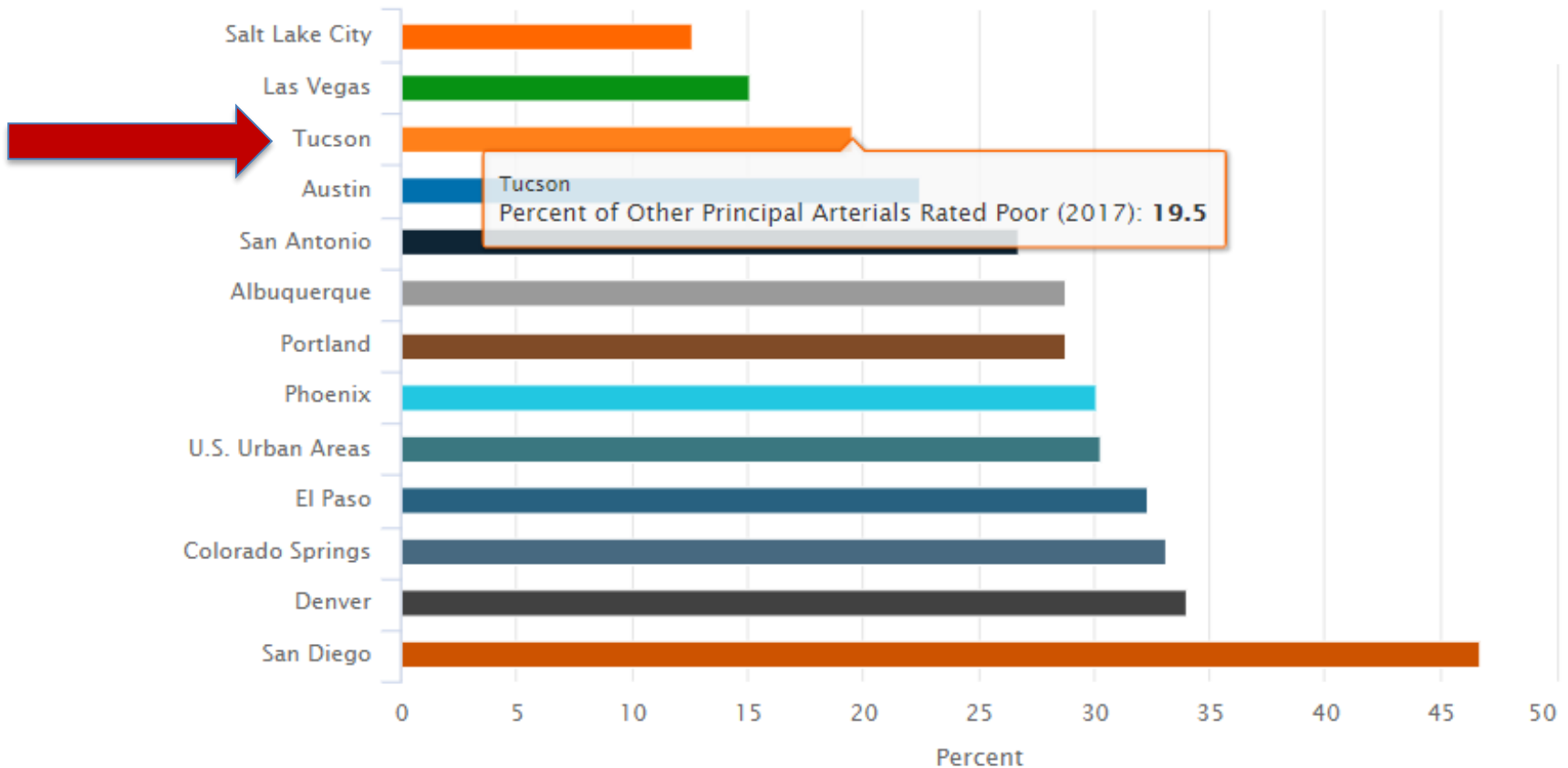
Figure 2: Percent of Vehicle Miles Traveled on Interstates and Other Freeways and Expressways (2017)





Fewer Bumps in the Road Ahead

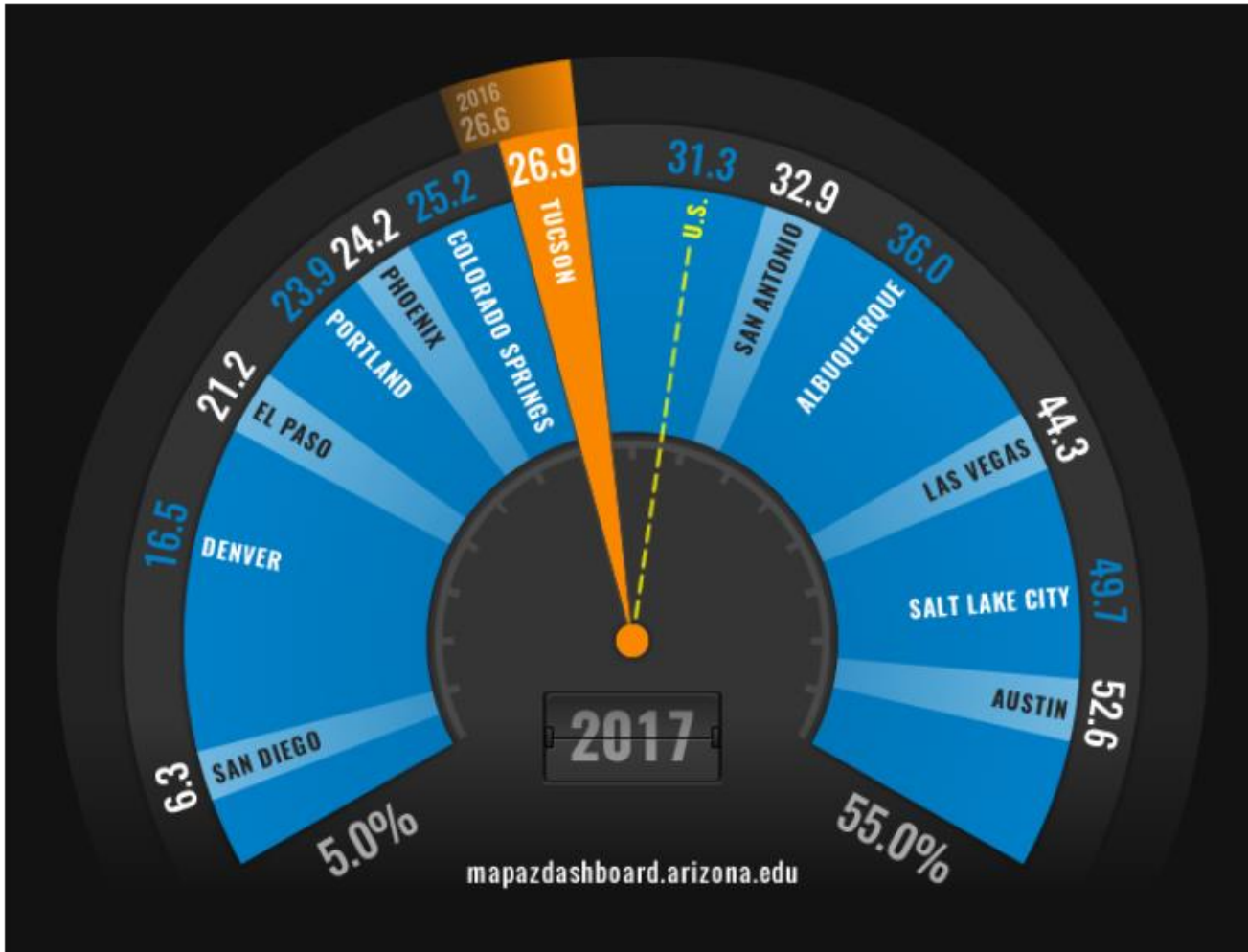
Figure 1: Percent of Other Principal Arterials Rated Poor (2017)





Fewer Bumps in the Road Ahead

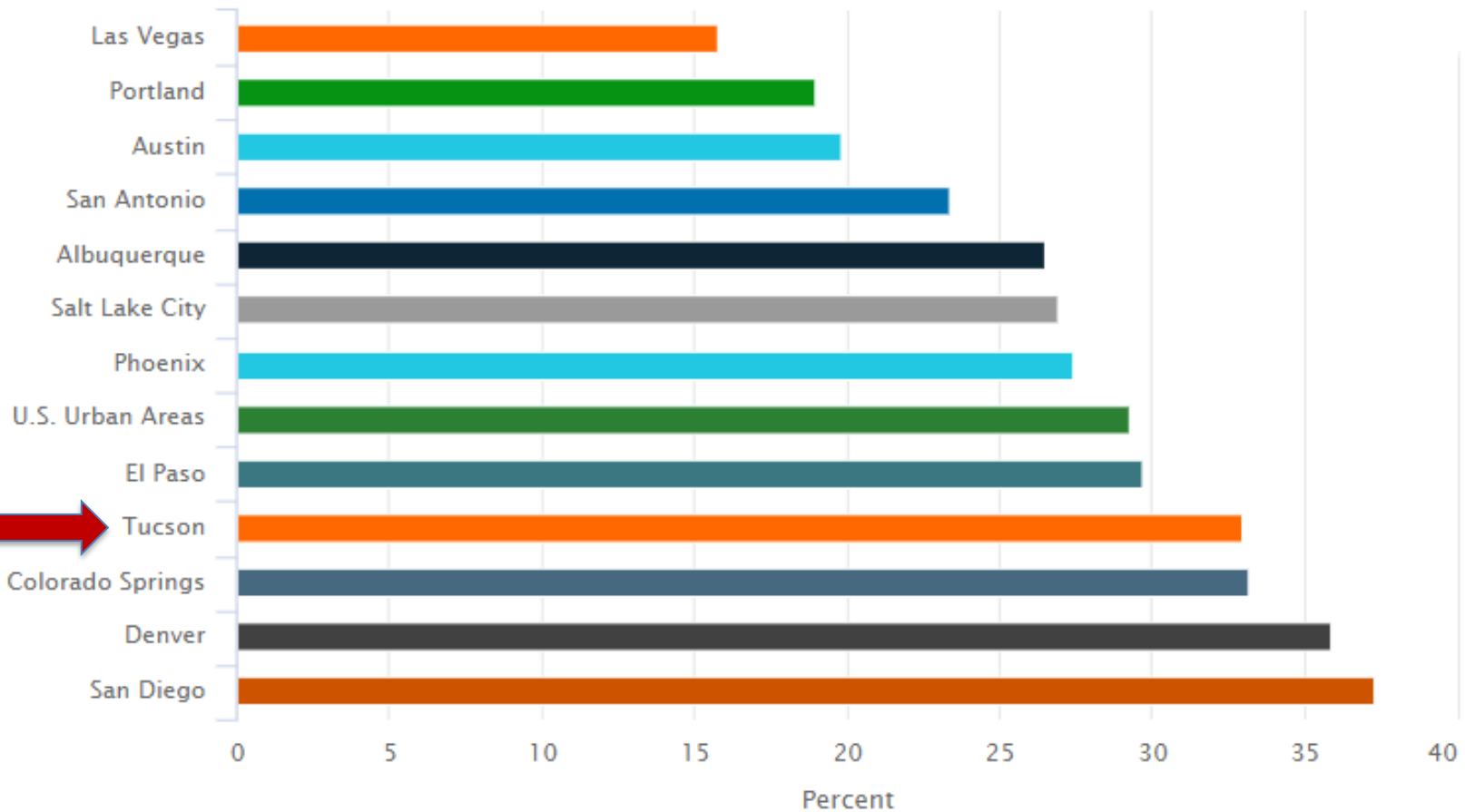
Figure 2: Percent of Other Principal Arterials Rated Good (2017)





Fewer Bumps in the Road Ahead

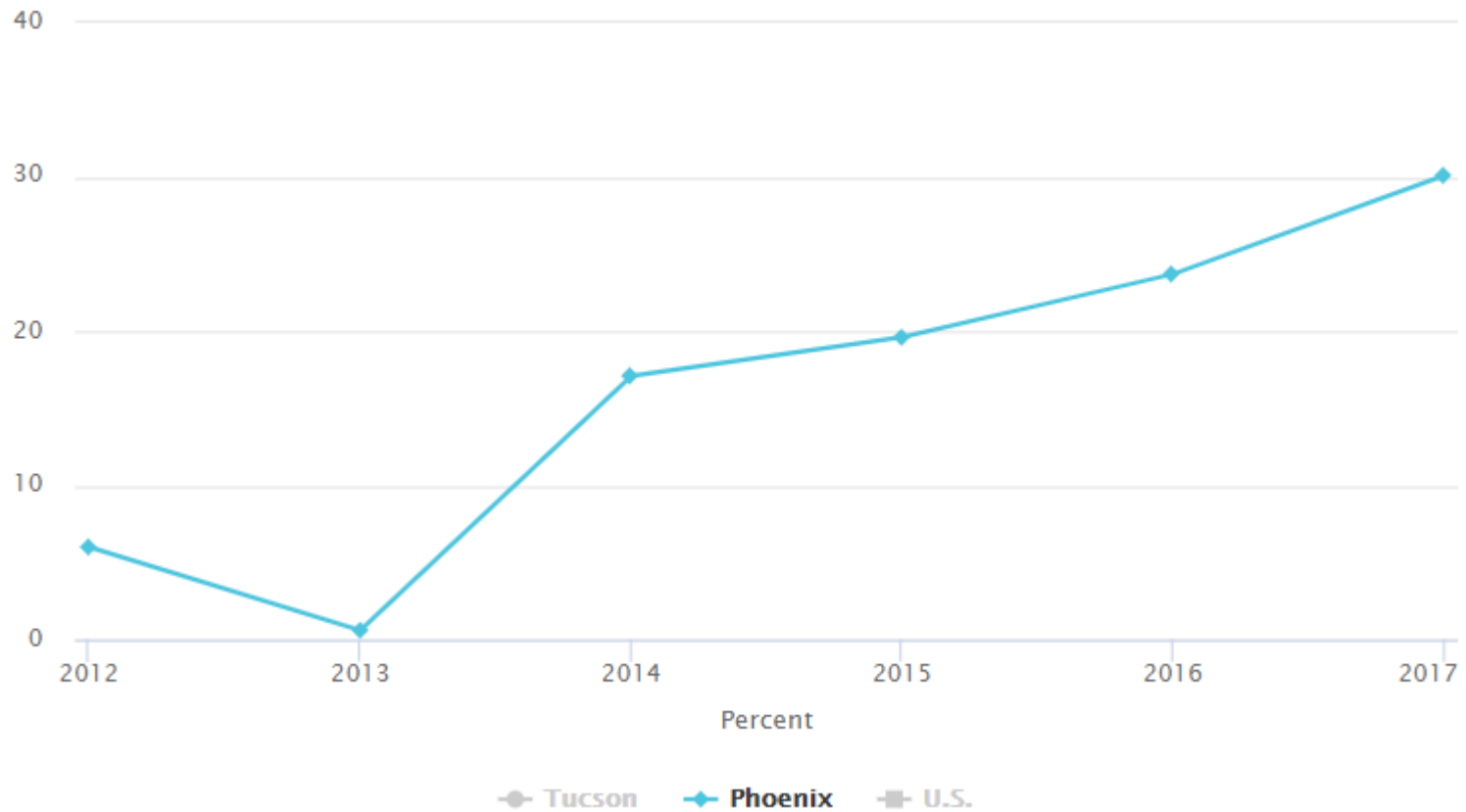
Figure 3: Percent of Major Roads in Urban Areas Rated Poor (2017)





Fewer Bumps in the Road Ahead

Figure 5: Percent of Other Principal Arterials Rated Poor





- **Conclusion**

- Tucson's road conditions have improved compared to peer urban areas
- Tucson has a heavy volume of traffic on arterial roadways
- Road roughness has declined significantly over the past six years on the roads we drive the most
- Road roughness data includes high volume roads not neighborhood streets
- Road conditions may vary across the region





MAKING ACTION POSSIBLE
for Southern Arizona



Engage With Us

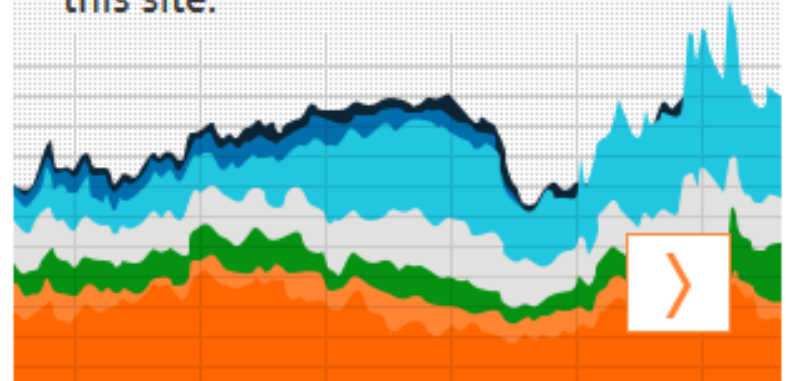
Subscribe For Updates

Get the latest MAP updates



Ask a Researcher

Connect with a researcher for
advice and statistics about data on
this site.





Upcoming Event

- Discussion on Housing Affordability in the Tucson MSA
 - Home Prices
 - Homeowner and Rental Affordability
 - Housing Cost Burden
 - Housing Costs Relative to the U.S.
- When: July 24th at 8:00am
- Where: Community Foundation for Southern Arizona's Campus





MAKING ACTION POSSIBLE
for Southern Arizona



Questions?

Thank you!

