



MAKING ACTION POSSIBLE  
*for Southern Arizona*



# MAP Talk

**Education, Innovation, and Growth  
Tucson's Trends and Prospects**

**June 13, 2018**



MAKING ACTION POSSIBLE  
*for Southern Arizona*



# George Hammond

## EBRC Director





# Meeting Details

- ▶ **MAP Talks will be recorded**
  - ▶ See the MAP Dashboard website for recordings
- ▶ **Conference mode**
  - ▶ Everyone muted except presenter
- ▶ **How to ask a question**
  - ▶ Email anytime to [ghammond@eller.arizona.edu](mailto:ghammond@eller.arizona.edu)



MAKING ACTION POSSIBLE  
for Southern Arizona



## Sustaining Sponsors



## Partners





## Awards



Metropolitan Pima Alliance

2016 Common Ground Award





# Arizona Daily Star

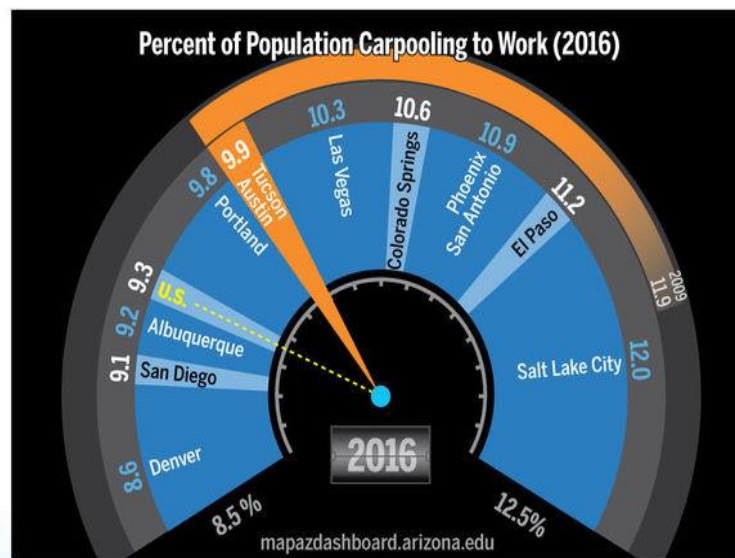
## Tucson economy: MAP Dashboard

Monthly Stats	Change Year/Year	
Non-farm jobs <b>384,500</b> (Feb. 2018)	<b>+1.2%</b>	▲
Unemployment rate <b>4.7%</b> (Feb. 2018)	<b>0.0%</b>	◀▶
Median home price <b>\$207,000</b> (Feb. 2018)	<b>+6.7%</b>	▲
Housing permits* <b>232</b> (Feb. 2018)	<b>+13.7%</b>	▲

\*Single-family permits, based on U.S. Census Bureau data

### Tucson ranks middling among peers but leads U.S. for number of carpoolers

In 2016, 9.9 percent of the Tucson Metropolitan Statistical Area (MSA) population reported carpooling to work. This ranked Tucson seventh, tied with Austin, among peer western metropolitan areas. How individuals get to work can have economic, social, and environmental consequences for our region. While driving alone is the primary mode of transportation to work for most Americans, carpooling has the potential to help mitigate some adverse consequences. Even though Tucson's carpooling rate ranks near the middle among peer metropolitan areas, the rate has decreased by two percentage points since 2009. Transportation-to-work indicators come from the Census Bureau and reflect five-year estimates.



#### About the MAP Dashboard

The MAP (Making Action Possible for Southern Arizona) Dashboard is produced by the UA Economic and Business Research Center in partnership with the Community Foundation for Southern Arizona, the Pima Association of Governments, and the Southern Arizona Leadership Council. A portion is published monthly in the **Arizona Daily Star**. To view more data, go to [mapazdashboard.arizona.edu](http://mapazdashboard.arizona.edu)



CHIARA BAUTISTA / ARIZONA DAILY STAR

# New MAP Indicators

- **Housing Affordability Index**
- **Physical Well-Being**
- **Creative Occupations**
- **Behavioral Health**
- **Road Conditions**











MAKING ACTION POSSIBLE  
for Southern Arizona



# Engage With Us

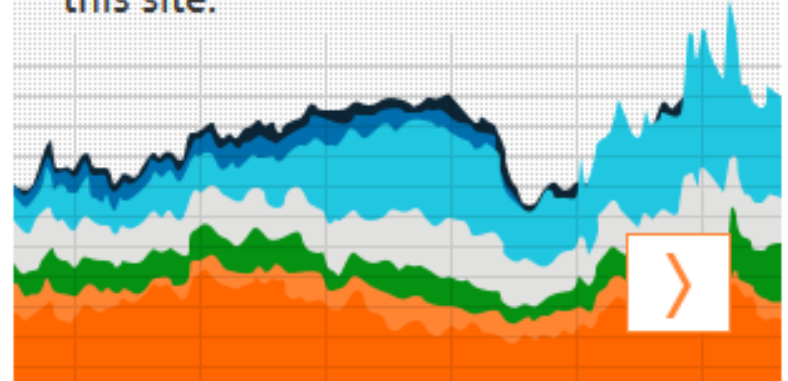
## Subscribe For Updates

Get the latest MAP updates



## Ask a Researcher

Connect with a researcher for  
advice and statistics about data on  
this site.





MAKING ACTION POSSIBLE  
*for Southern Arizona*



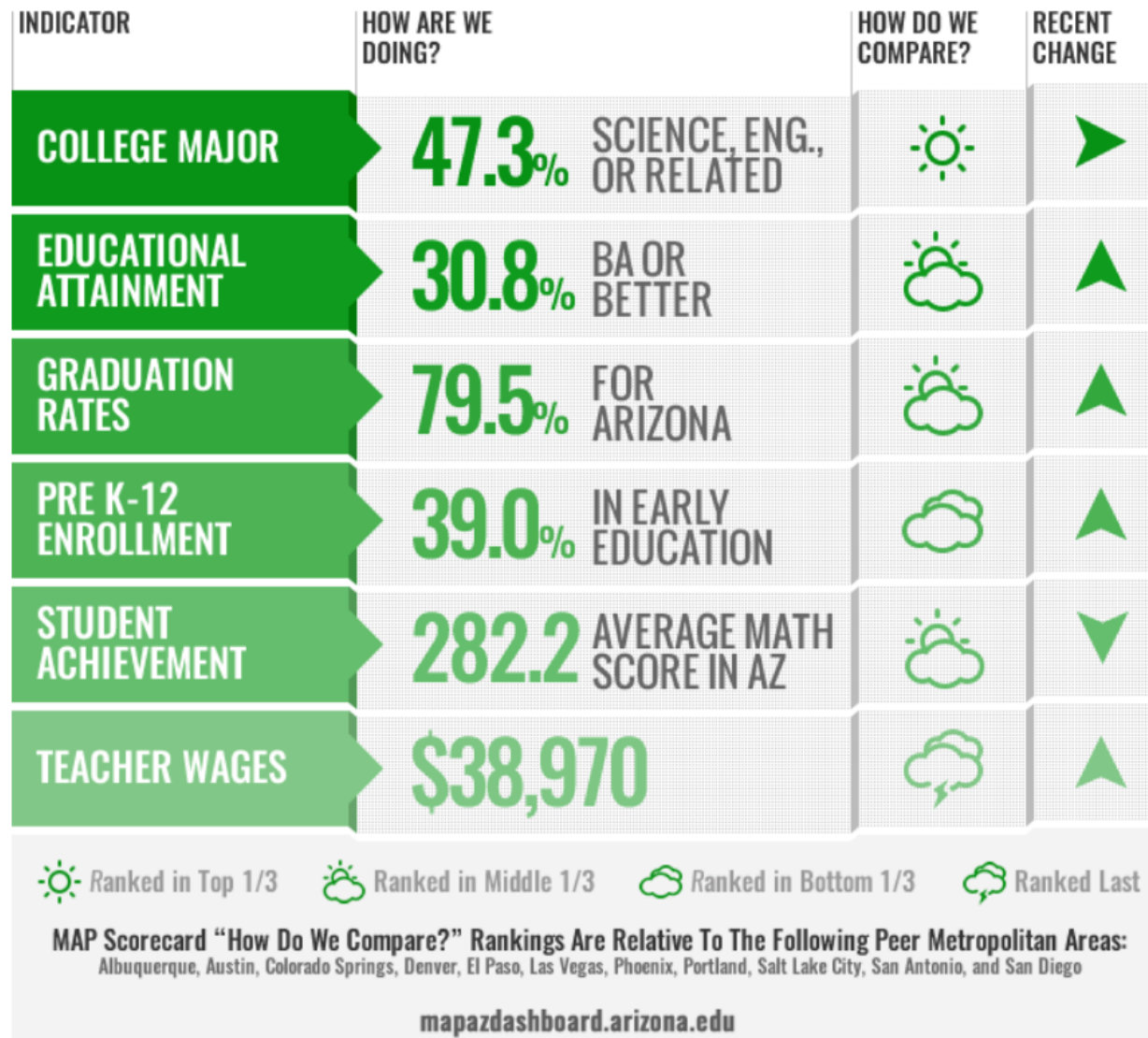
# Jennifer Pullen

## MAP Dashboard Coordinator

[jpullen@eller.arizona.edu](mailto:jpullen@eller.arizona.edu)

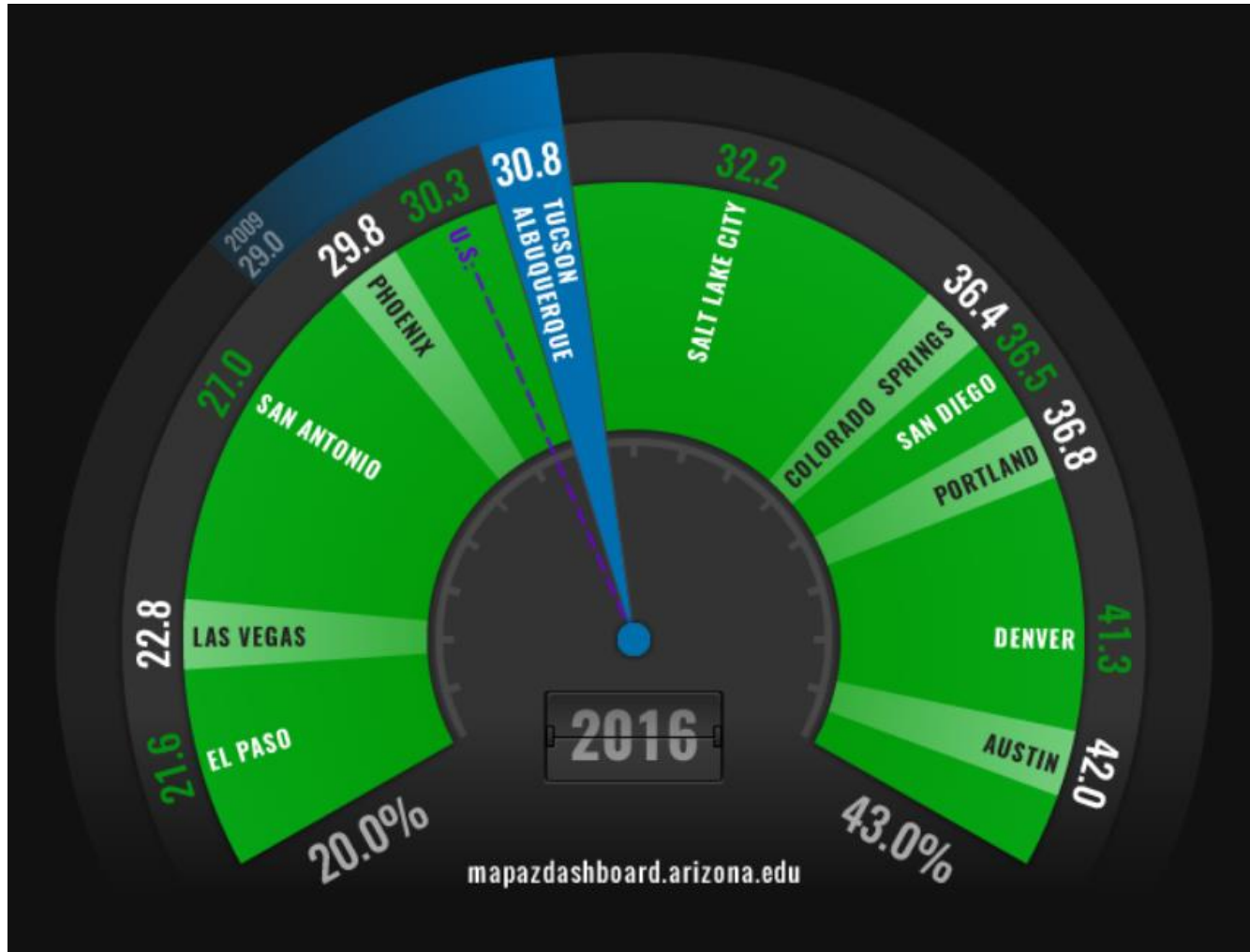


# Tucson MSA Education Scorecard



# Educational Attainment

## Four-Year College Attainment, Population Age 25+





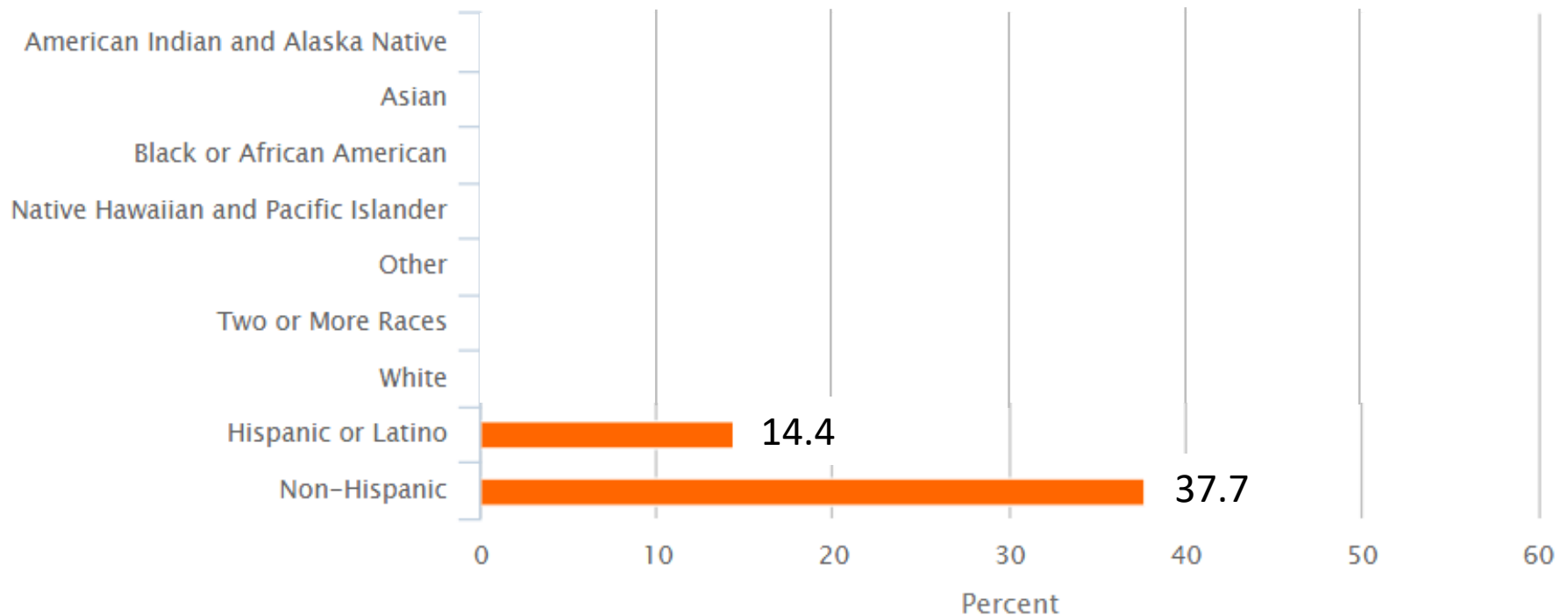
# Tucson Educational Attainment 2016

## Four-Year College Attainment

AGE	TUCSON	ARIZONA	U.S.
18-24	7.6%	7.4%	10.2%
25-34	27.0%	26.5%	33.7%
35-44	30.6%	29.6%	34.1%
45-64	30.5%	28.1%	29.6%
65+	34.0%	27.6%	25.0%

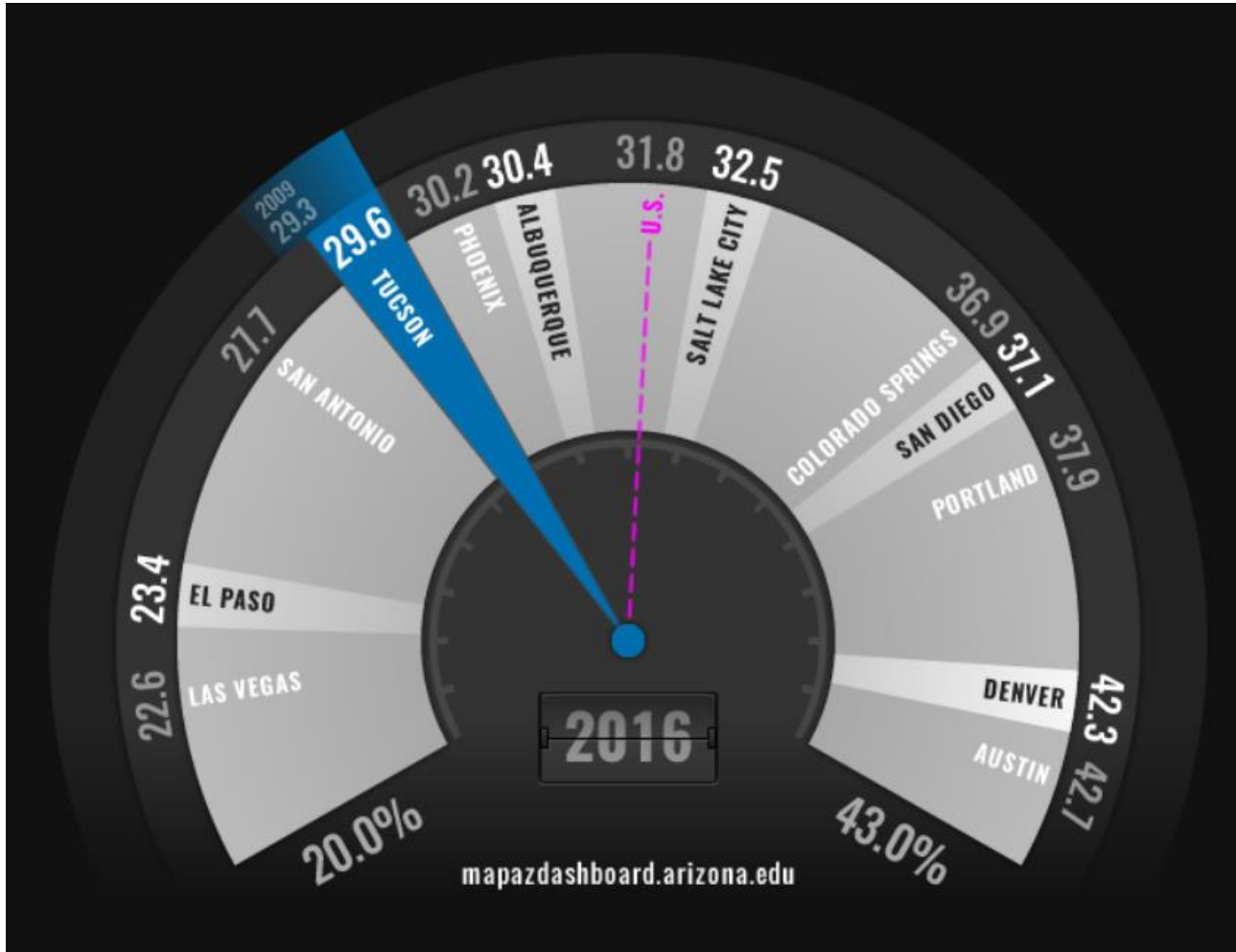
# Tucson Educational Attainment 2016

## Four-Year College Attainment, Population Age 25+



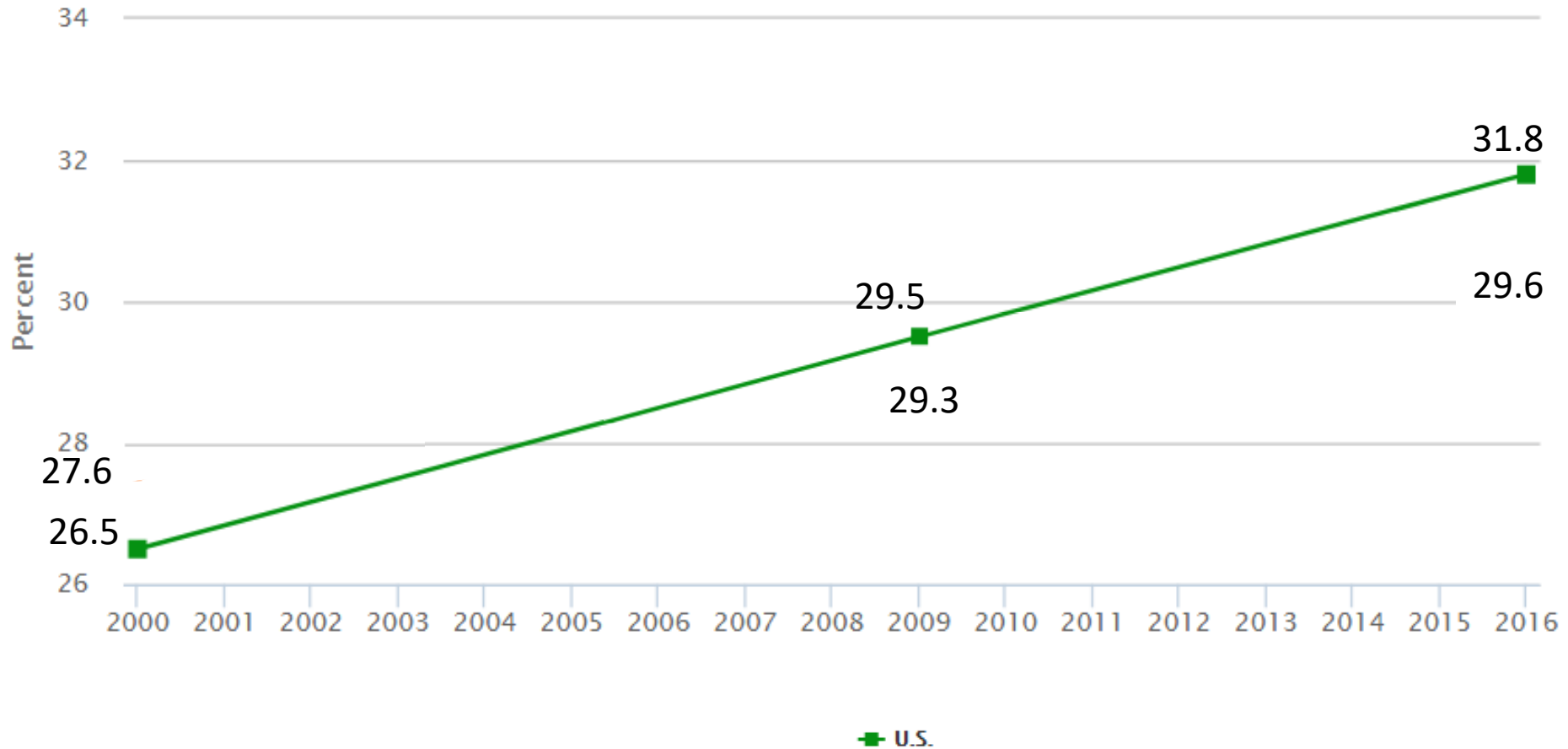
# Educational Attainment

## Four-Year College Attainment, Population Age 25-64



# Educational Attainment

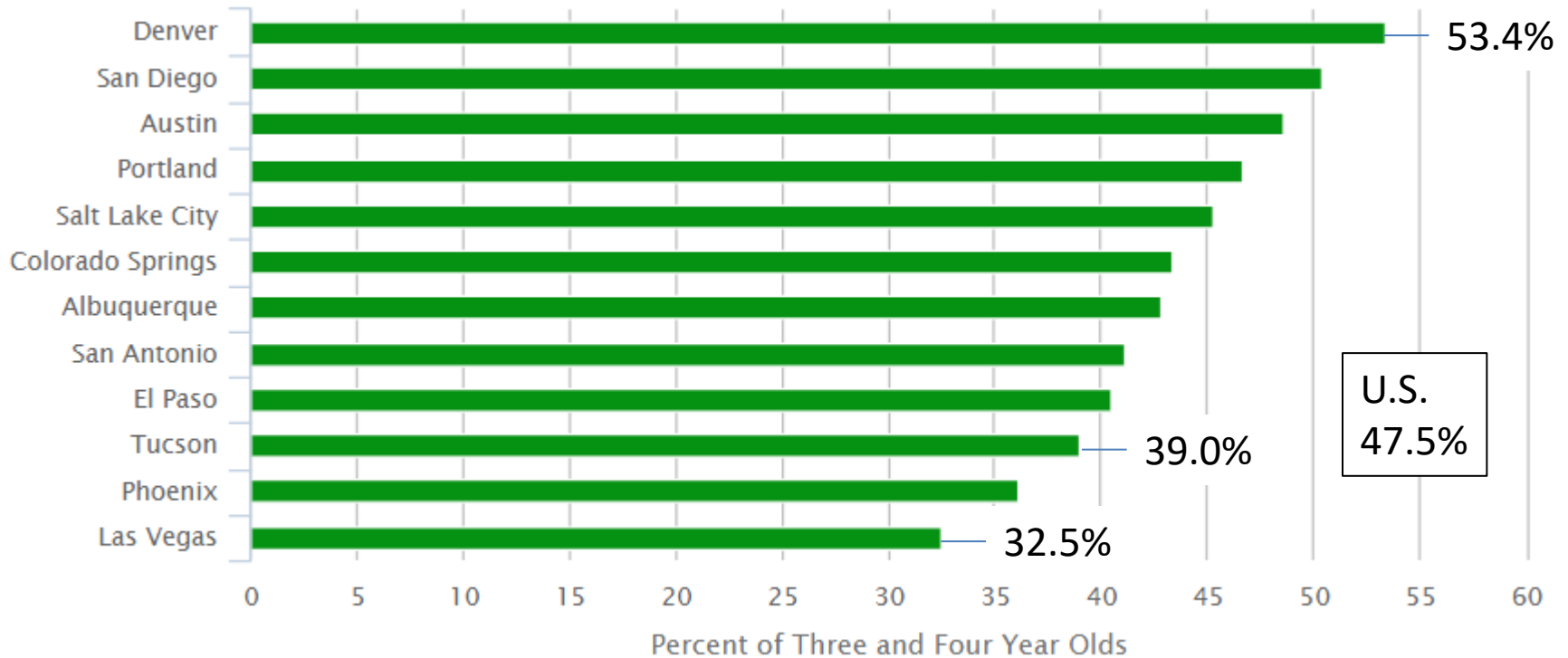
## Four-Year College Attainment, Population Age 25-64





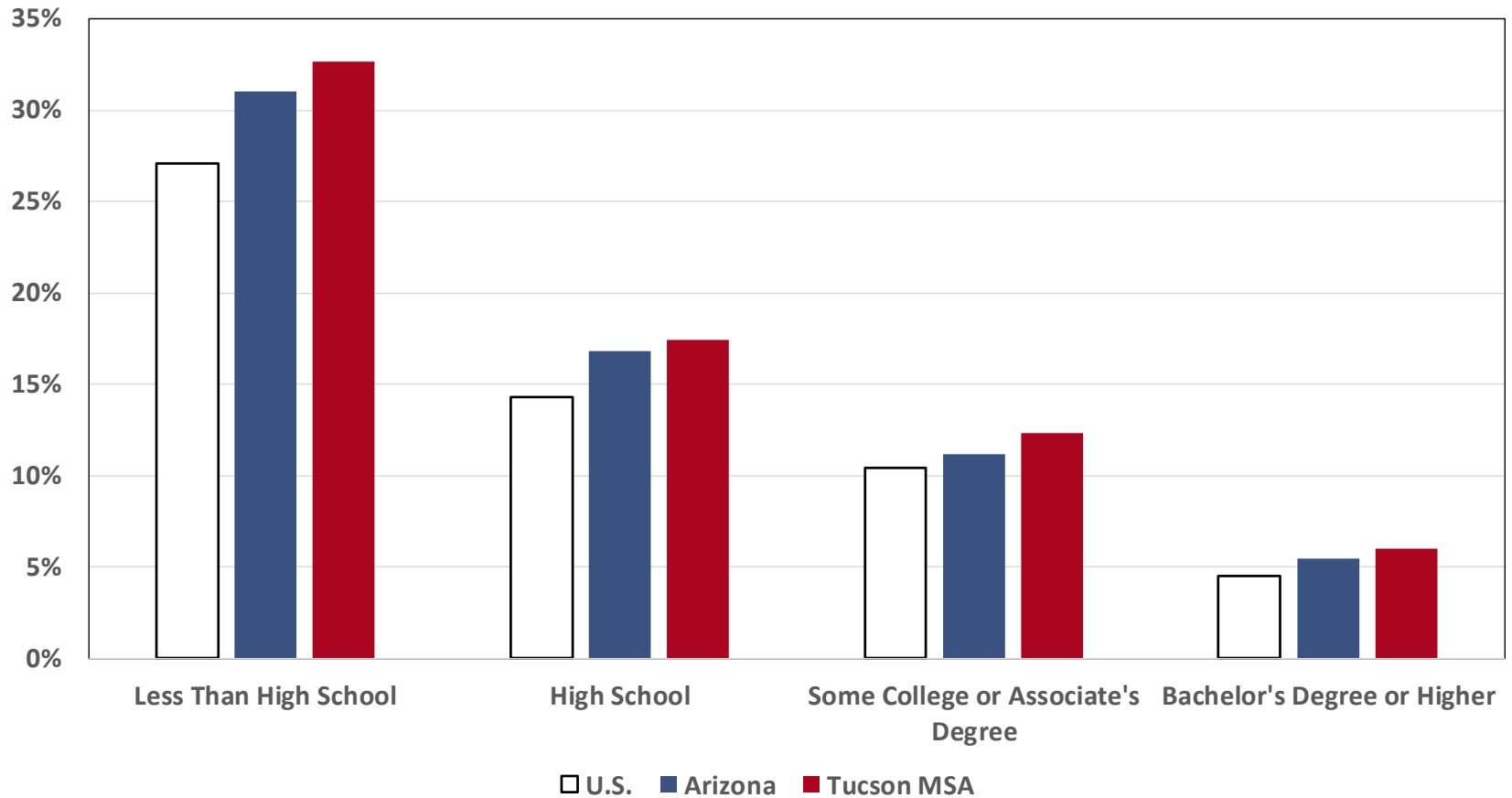
# PreK Enrollment 2016

## All Programs

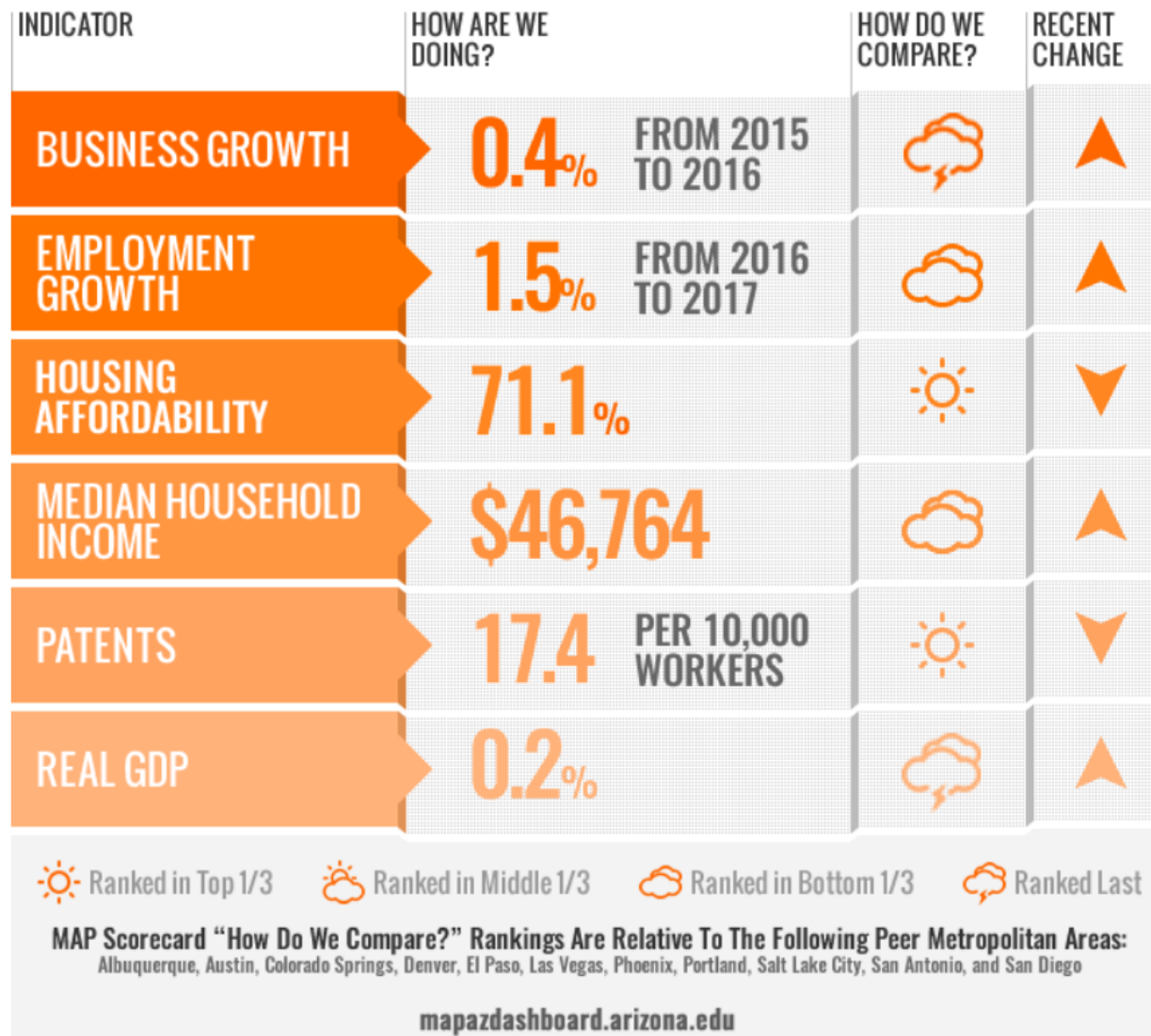


# Education And Poverty

Population Age 25+, 2016

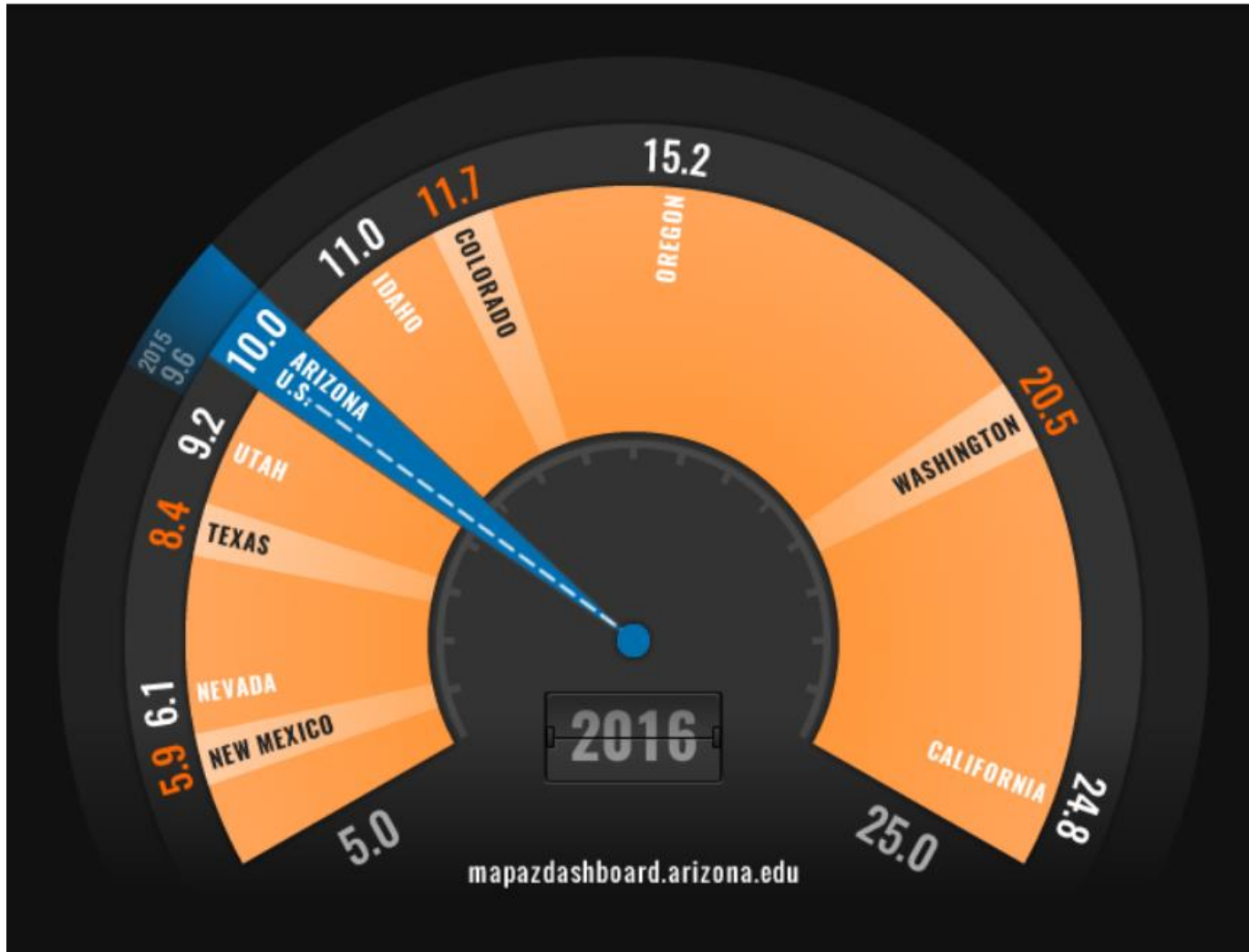


# Tucson MSA Economy Scorecard



# Western State Patent Activity

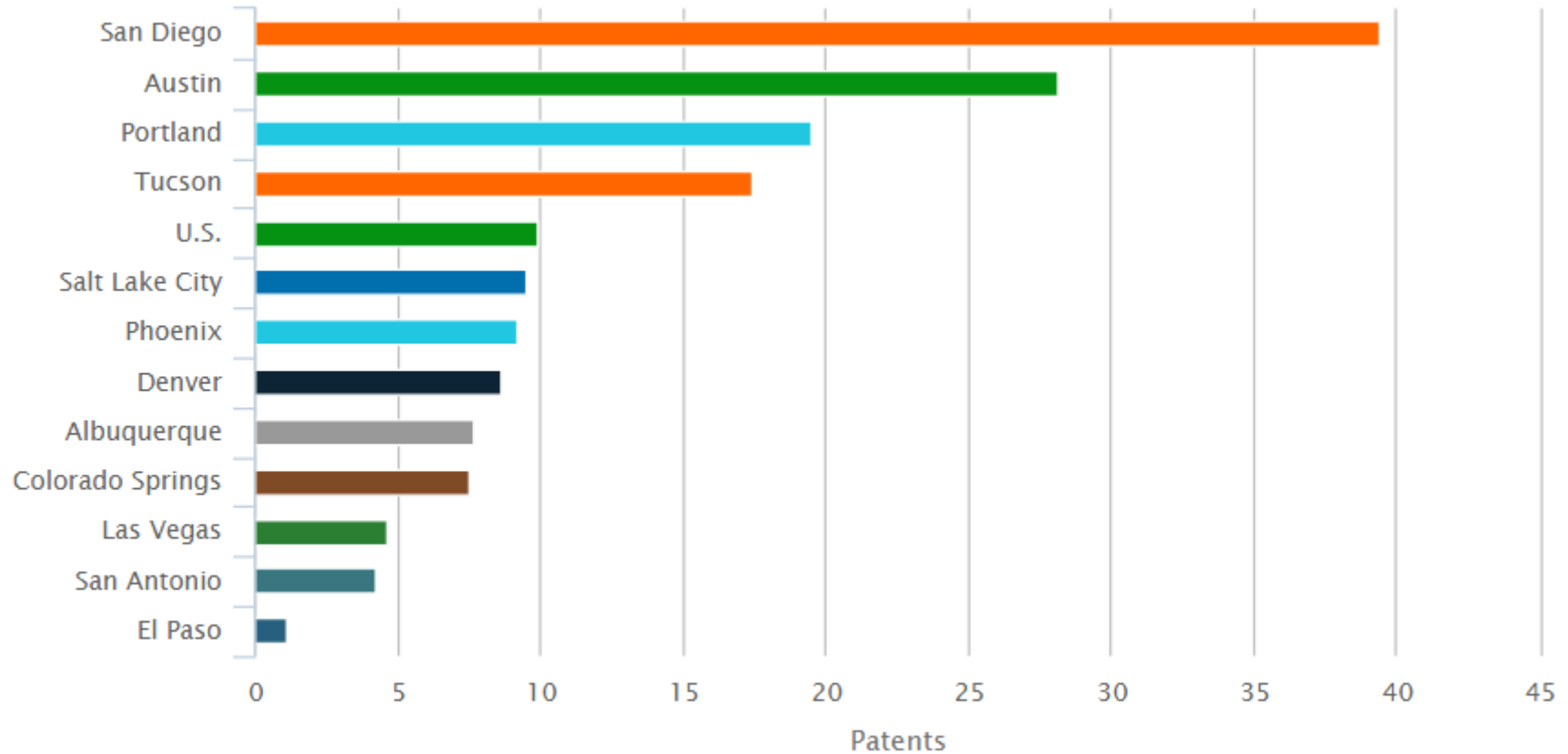
## Patents Per 10,000 Workers





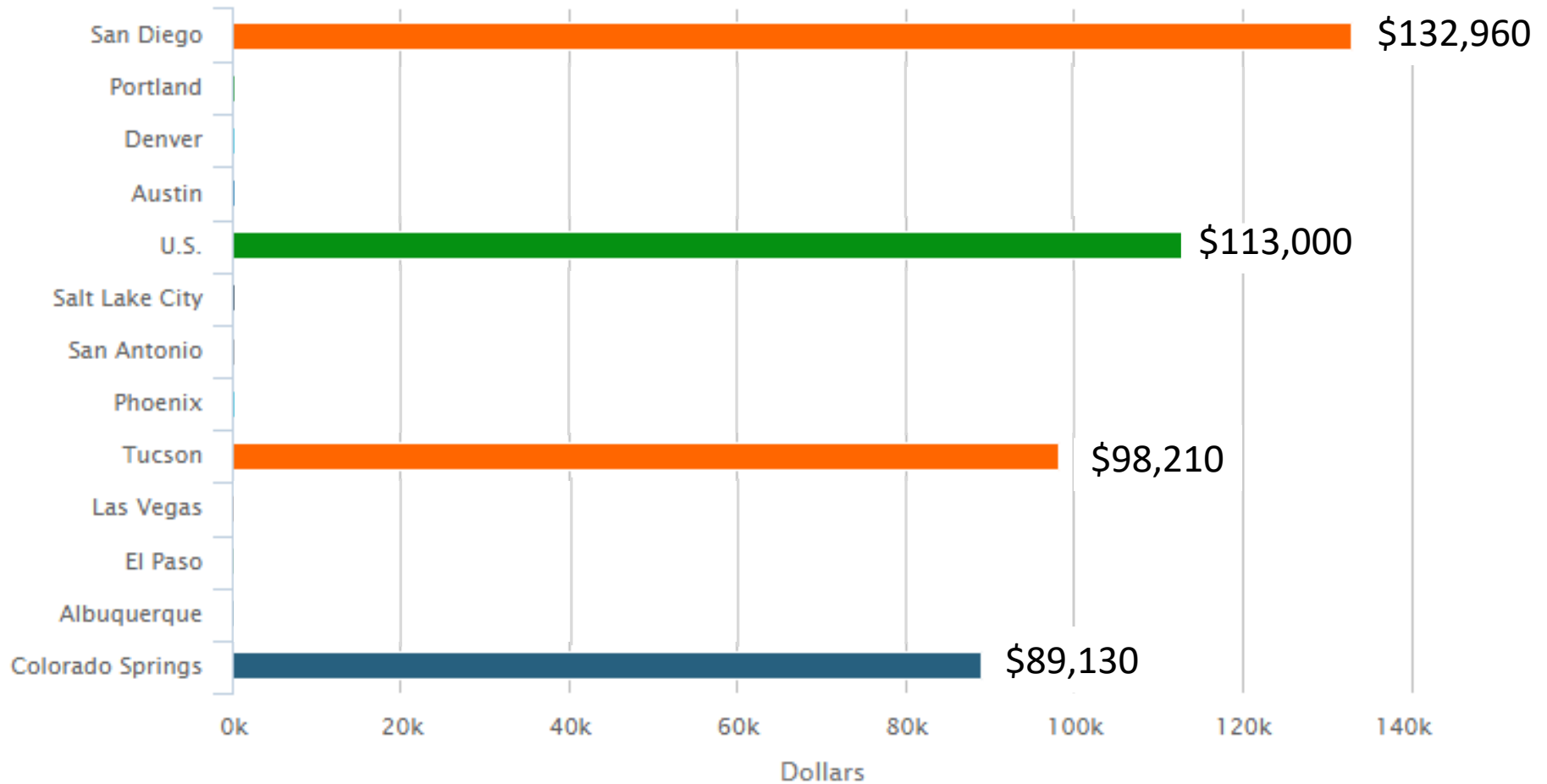
# Tucson Does Better In Patents

## Patents Per 10,000 Workers



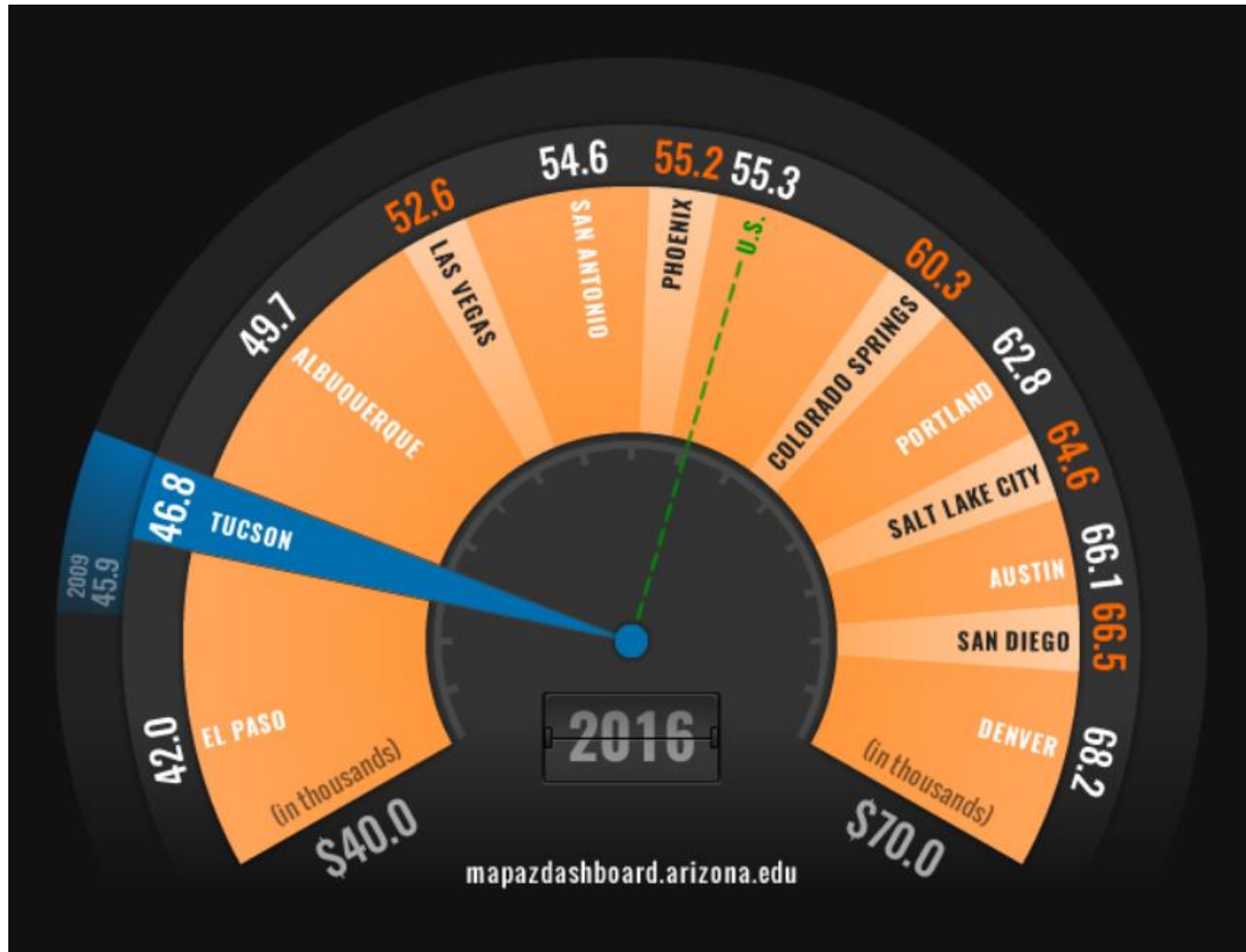
# Productivity Is Key

## Output Per Worker In 2015



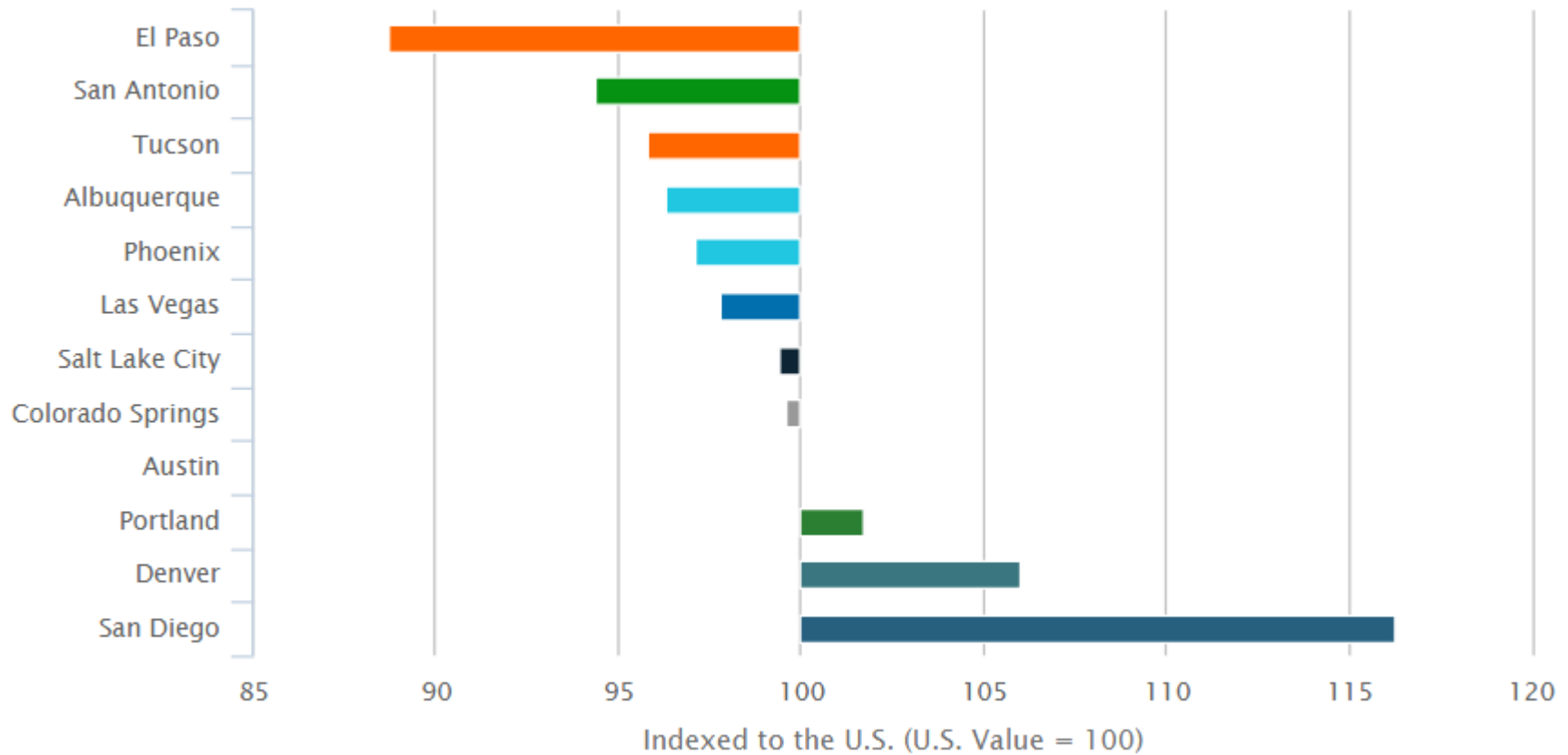
# Tucson Ranks Low On Income

## Median Household Income



# Tucson's Cost Of Living Is Low

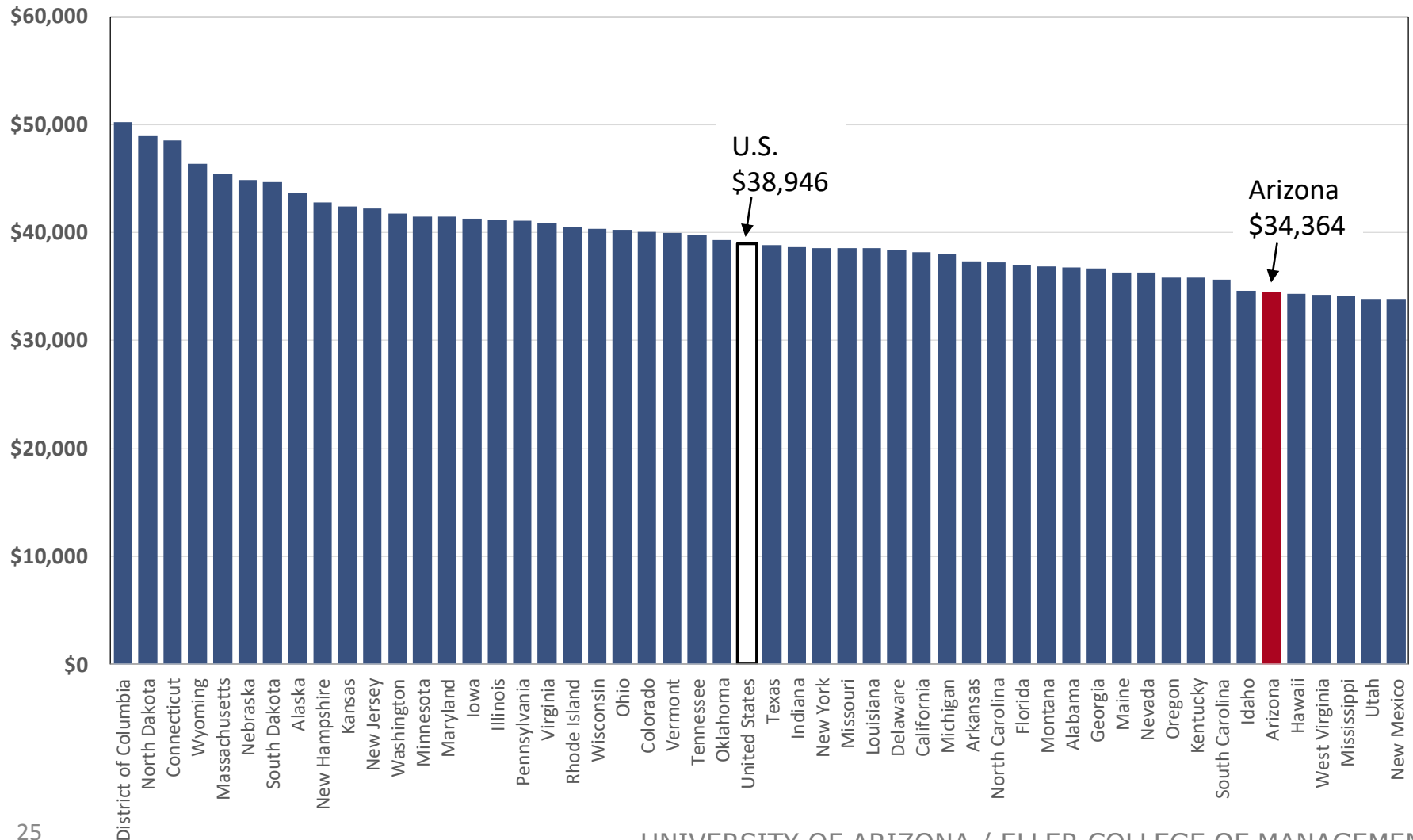
Relative To The Nation In 2016





# U.S. Real Disposable Income

**\$2009 Per Capita By State, Adjusted For Cost Of Living**



# To Sum Up

---

- ▶ **The college attainment rate for the working age population is a key benchmark for innovation and growth.**
  - ▶ Tucson is falling behind.
- ▶ **Tucson's patent activity is good, but is not translating into strong productivity.**
- ▶ **Productivity is one key driver of wage gains, which are crucial for improvement in our standard of living.**
- ▶ **Arizona's per capita income is low, even after we account differences in cost of living and taxes.**